

Quick Installation Guide

Network Video Recorder



Model: FN3004H
Colour: Black



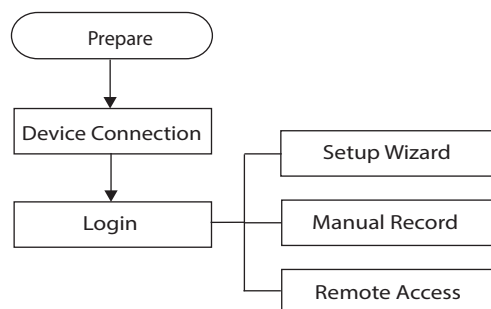
Model: FN3004H
Colour: White

1 Before You Start

Package Contents

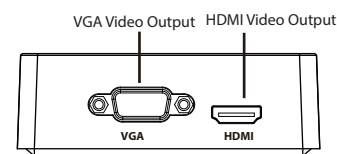
NVR x1	CD x 1
DC Power Adapter x1	Warranty Card x1
Quick Installation Guide x1	

Installation Process

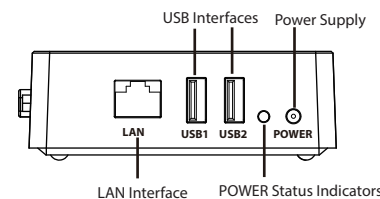


2 Device Connection

● Side Panel



● Rear Panel

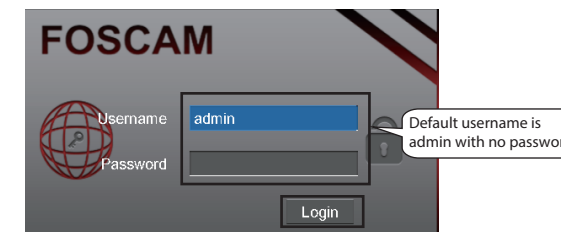


● Interface Connection

1. Connect a display device to the video output interface.
2. Connect a router to the LAN interface. In addition, connect the router to a IPC device and a computer so that they are in the same LAN.
3. Connect a mobile storage device, for example, USB drive or mobile hard drive, to the USB interface.
4. Connect a mouse to the USB interface.
5. Connect the power adapter to the power input interface.

3 Login

1. After the NVR starts up successfully, the Power indicator LED should be green. The startup page is displayed on the screen.
2. Login page.
Enter **Username** and **Password**, then click **Login** button.
Default username is admin with no password.



3. For the initial log in, the system will pop up a message for modifying the username/password. Click **OK** button.

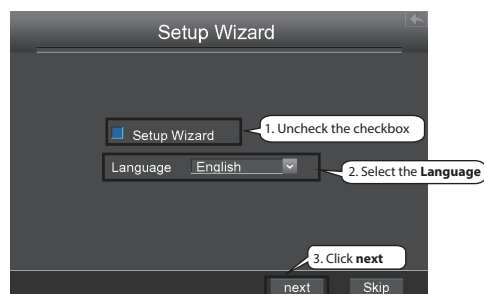


4. After modifying the username/password, enter the **Setup Wizard** interface.

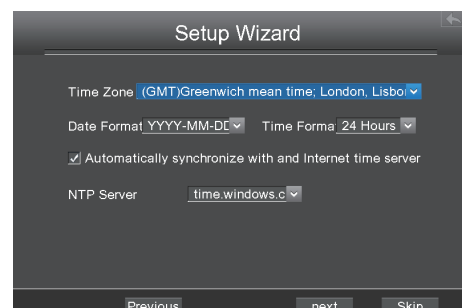
4 Setup Wizard

The Setup Wizard can walk you through some important settings of the NVR.

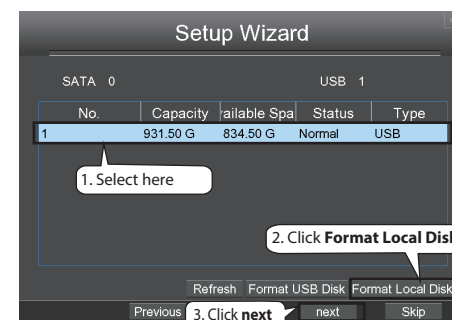
1. Select the **Language**. If you don't want to use the Setup Wizard next time, uncheck the **Setup Wizard** checkbox.



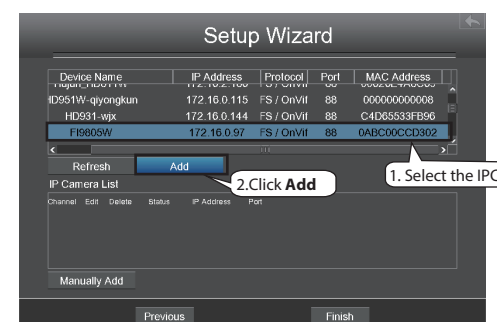
2. After the time settings, click **next** button.



3. Select the mobile storage device, then click the **Format Local Disk** button to initialize the mobile storage device for recording.



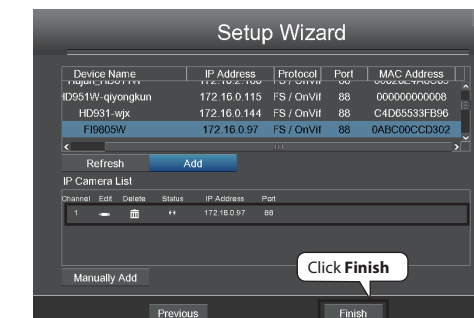
4. You can add the online IPC device for your NVR.



You can configure the following information of the IP Camera. Click **OK** button which to go back to the Setup Wizard page.



5. Find the IP Camera in the **IP Camera List**, then click **Finish** button to complete the setup wizard.



The live view interface will show you the video image getting from each IP Camera.

5 Manual Record

After the IPC device is added successfully to the NVR, you can enable the manual recording function in the live view mode.

1. Right click the mouse in the live view mode, and the shortcut menu will pop up.
2. Select the **Manual Record** to enter the **Manual Record** page.
3. Check the channel which you want to enable recording. Click **OK** button.
4. Then click icon to exit the interface.

In the live view mode, the icon is at the right bottom of the screen for the channel, indicating recording is on going.



Note
To disable recording, uncheck the **channel** checkbox on the **Manual Record** interface.

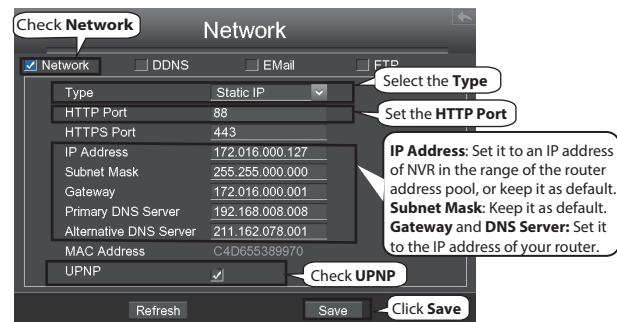
6 Remote Access

Assume you need to log in to your NVR from another network outside the LAN via the browser. You need to perform following configurations:

Note
This product supports 32-bit IE8 or later versions and does not support 64-bit browsers.

6.1 Network Configuration

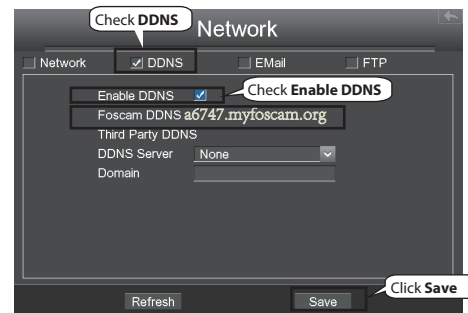
1. Configure network information.
Right click the mouse in the live view mode, choose "Menu > Settings > Network". Check the **Network** checkbox, configure the following information.



Note
It is highly recommended to set the **HTTP Port** range from 5000 to 65535, and the value of the **HTTP Port No.** for each device should be unique.

2. Configure the DDNS.

Right click the mouse in the live view mode, choose "Menu > Settings > Network". Check the **DDNS** checkbox. Enable DDNS of the NVR. We recommend you to use the DDNS by factory default.



6.2 Access to the NVR in LAN

There are two ways to access to the NVR via the browser in LAN.

- Open the IP Camera Tool program in the resource CD. It will display the NVR's IP address and port in your LAN. Double click the NVR list here, and your default browser will open up to the login page.

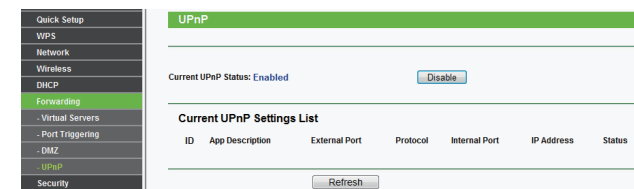


- You can also access to your NVR by `http://IP address:HTTP port` via the browser. eg, `http://172.16.0.127:88`

6.3 Access to the NVR in WAN

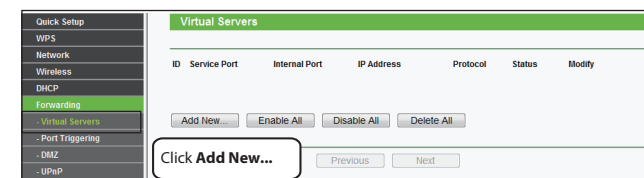
If UPnP has been enabled in the router, you do not need to perform the following steps. If UPnP is disabled, you need to select one of the following methods to configure port forwarding on your router. For these steps, we will be using the TP-LINK brand wireless router as an example.

- If there is a UPnP function in your router.
Choose "Forwarding > UPnP", make sure that the **Current UPnP Status is Enabled**.



- If there is no UPnP function in your router.

You need to manually add port(HTTPS port) forwarding, refer to the following steps. You need go to the "Forwarding > Virtual Servers" panel for setup.



7 FAQ

- ★ Why recording is not performed after motion detection is enabled?

On the "Motion Detection" page, check whether the following are correctly set:

- Check whether enable is selected. Check whether recording is selected.
- Check whether the motion detection channel is correct.
- Check whether a trigger time segment is set.
- Check whether a detection area is set.

- ★ Why can the NVR search the IPC but cannot connect the IPC?

On the "IPC management" page, check whether the following are correctly set:

- Check whether the user name and password for the IPC are correct.
- Check whether the web page port for the IPC is correct.
- Check whether the IPC also supports the protocol selected in the NVR.
- Check whether the IPC video is normal.

- ★ Why can't video files be downloaded during video playback or downloaded files cannot be played back properly?

To save consumed resources, the server limits concurrency of video playback and file download. In this case, stop video playback and then download files or play back videos after video files are downloaded.

- ★ After the adding of the IPC successfully, the video of the corresponding channel has lost in the live view mode.

Make sure that the IPC display mode is not more than NVR display mode. For example: NVR display mode for the 4 * 960P, the IPC display mode can not be 1080P.

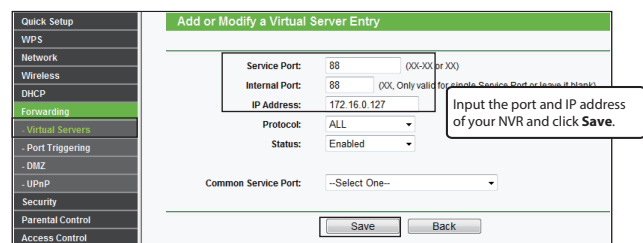
- ★ Why can't opened web pages on the client be used properly after the NVR server switches to the 1080P mode?

When the NVR server switches to the 1080P mode, some functions can take effect only after the server reboots. In this case, log out of the Web client and log in to it again. In similar cases, for example, changing the IP address and HTTP port of the NVR, you need to log in to the client again.

8 Technical Support

If you have problems with your Foscam device, please contact the Foscam reseller you purchased from, or you can e-mail the Foscam headquarter technical support team: tech@foscam.com.

Your valuable comments and suggestions on improving Foscam products are welcomed!



Now you can access to your NVR by `http://domain name:HTTP port` via the browser. eg, `http://a6747.myfoscam.org:88`

